

# Making MMS1 with No Odor and Little Taste

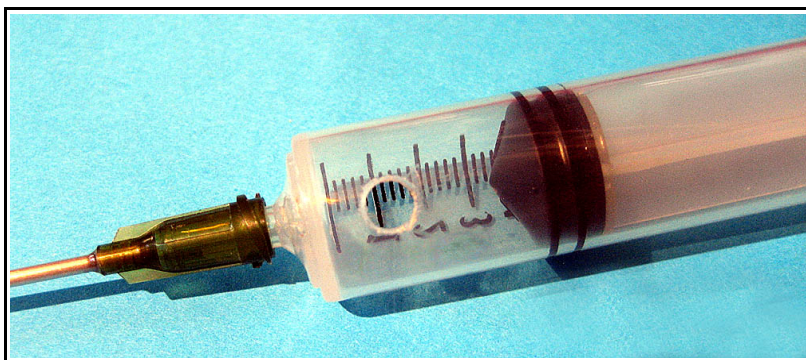
<http://mmsinfo.org/> 16 April 2018

## Making MMS1 in a Syringe©

These are the parts needed to make & ingest MMS1 doses with no odor and 'acceptable' taste.

1. **A glass, narrow-mouth bottle with a capacity of about 5 fl oz (150 ml).** You will be drinking MMS1 doses from this tall, narrow mouth bottle. There should be no detectable odor when drinking from this bottle **because your nose is not inside the bottle.** If drinking a MMS1 dose from a glass or cup, your nose is inside the glass or cup and you will smell CLO2 gas. If you can smell what you are drinking, the perceived taste will be enhanced.

2. **A plastic syringe of about 10 or 12 ml capacity.** This syringe is where MMS and activator will produce MMS1. The syringe needs to be modified by drilling a 3/16" (4.5 mm) diameter or larger hole near the tip end of the syringe. MMS and activator drops will be dropped through this hole to activate inside the syringe.

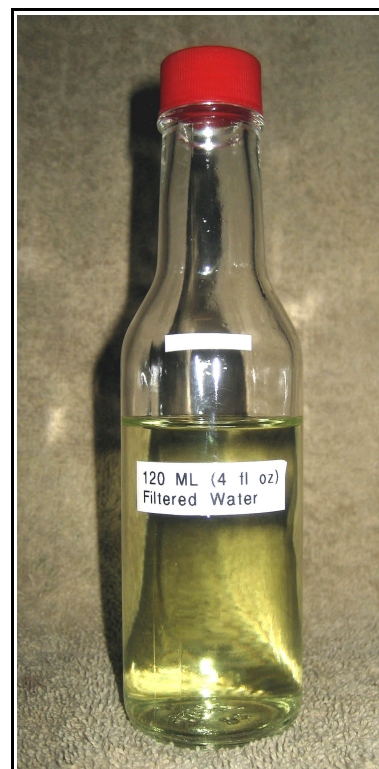


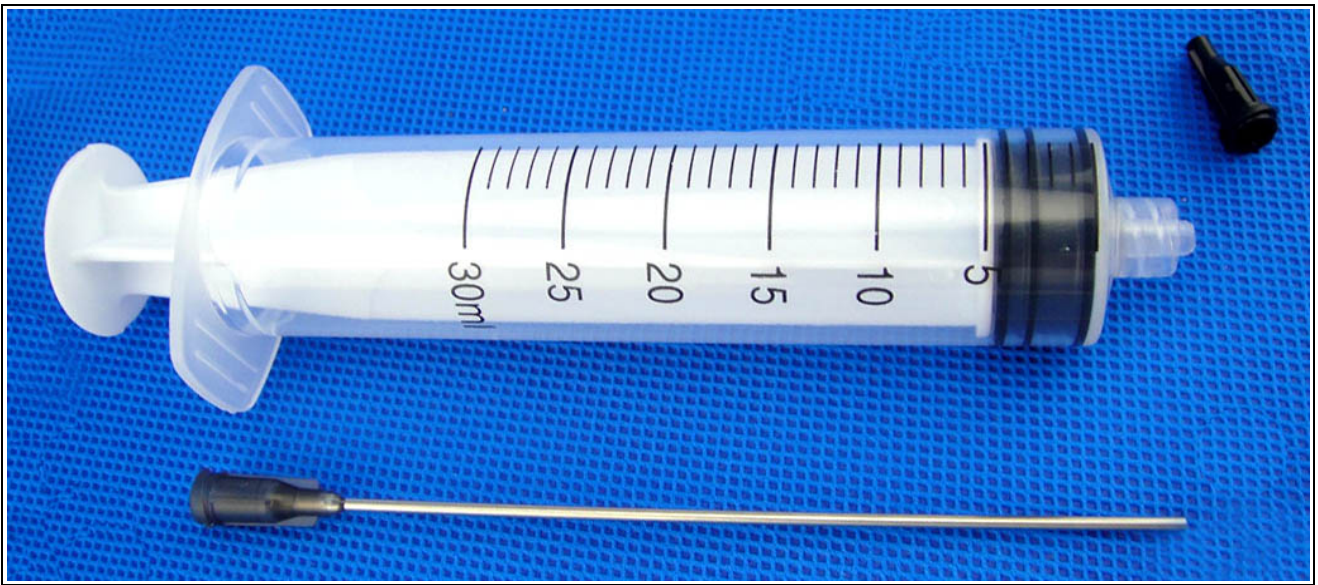
3. **A long, blunt-tipped stainless steel syringe needle.** Both the syringe and long needle can be found where ink jet printer supplies are sold. They are used to refill ink cartridges. Also used for precision oiling of machines.

4. **Tape to temporarily cover the syringe hole during activation.** Most any tape can be used. The best tape I have found to date is aluminum tape used in the HVAC industry. You can find it at hardware stores. No, aluminum does not come in contact with the MMS1 solution or CLO2 gas because the tape's adhesive is between the syringe and the aluminum part of the tape.

### Instructions

- A. Attach the long needle to the syringe and pull the syringe plunger back about half-way. Lay the syringe on a flat surface with the hole facing up.
- B. Drop appropriate amounts of MMS and activator drops into the syringe through the hole.
- C. Immediately cover the hole with tape or use your finger or thumb.
- D. After 30 seconds of activation, pick up the syringe and squirt the solution into the bottle which has been pre-filled with 4 fl oz (120 ml) of water. Be sure to squirt the MMS1 solution into the water and not above the water.
- E. **This method really does work!** I have made 15 drop MMS1 doses with no odor detected and the taste is quite acceptable. Try it!





Here is a 30 ml syringe, a long blunt-tipped needle and a cap. This syringe has a Luer lock tip which will prevent the needle from falling off the syringe. The needle screws into the syringe Luer lock tip.

